

Annual Delivery Report

| 2022



Contents

1. Introduction/Foreword	3
2. Our Vision for Leicestershire.....	4
3. Clean and Green.....	5
4. Great Communities	11
5. Improved Opportunities	18
6. Strong Economy, Transport and Infrastructure	25
7. Safe and Well	33

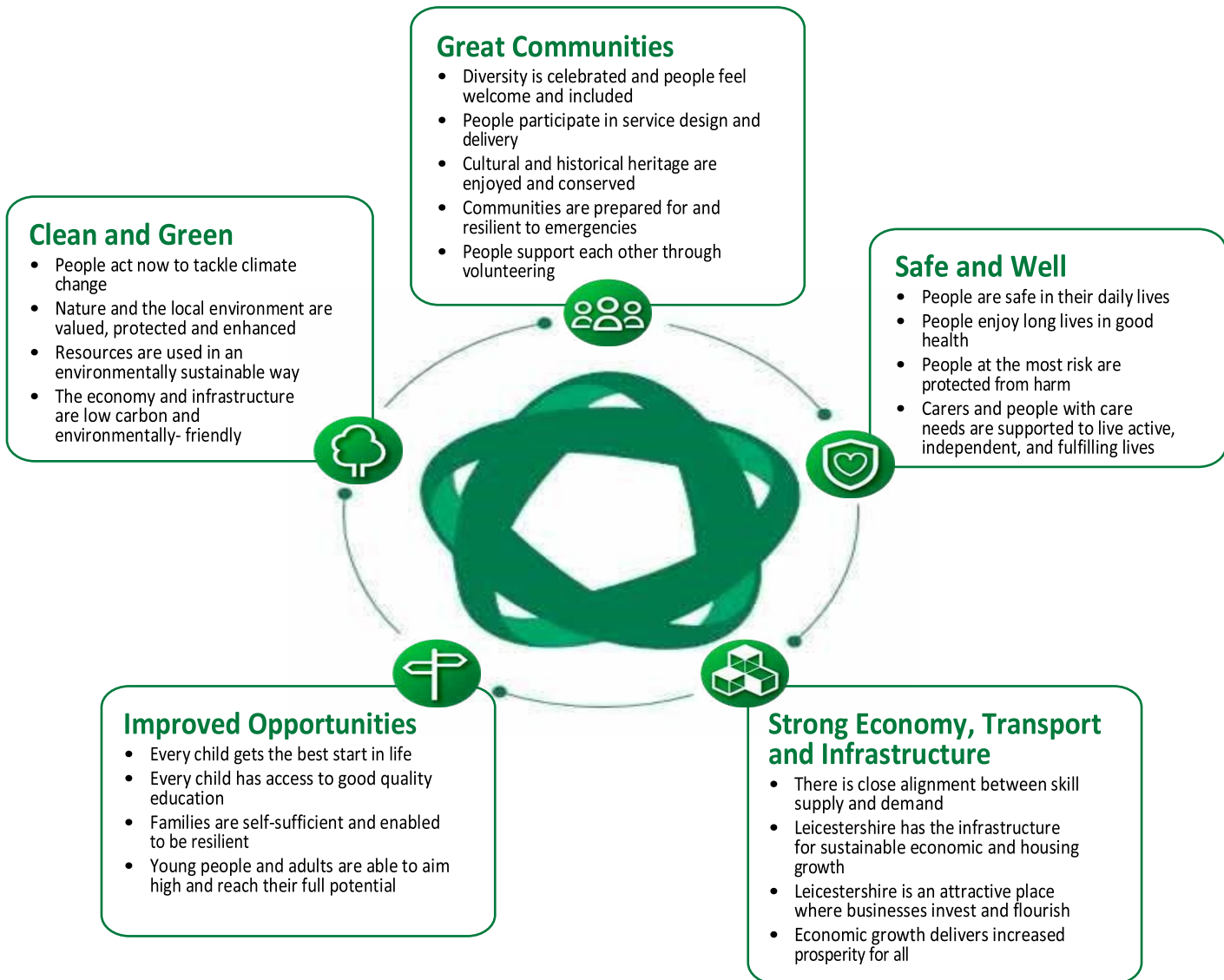
1. Introduction/Foreword

In May 2022 the County Council agreed a four-year Strategic Plan covering the period to 2026. The Plan focuses on the things that will make life better for people in Leicestershire and sets out our approach to meeting the many challenges emerging post-Covid-19 and to support the wider levelling up agenda. Our aspirational vision and outcomes are set out in section 2 and this report summarises our key aims and some of the progress over the past year or so.

The Council is continuing to operate in an extremely challenging financial environment following a decade of austerity and spending pressures, particularly from social care. This has been further exacerbated by the Covid-19 pandemic. Since the 2022-26 MTFS was produced, the financial situation facing the Council has become even worse, with rapidly rising inflation, growing infrastructure costs, and an unrelenting demand on services all contributing to what is being described as a 'dire' financial challenge. The funding gap is projected to potentially be around £135m by 2026/27 and balancing the books will be harder than ever.

The County Council continues to be one of the lowest funded authorities and continues to campaign for a fair funding deal, recently leading the formation of the F20 group. We continue with our efforts and lobbying of MPs and in the meantime, we are seeking to deliver as many of our Strategic Plan outcomes as possible, by focusing available resources on our key priorities.

2. Our Vision for Leicestershire



3. Clean and Green

This outcome reflects the need to protect and enhance the environment and tackle climate change.

Sub-Outcome	Our Aims by 2026
People act now to tackle climate change	<ul style="list-style-type: none"> • More residents actively involved in tackling climate change
Nature and the local environment are valued, protected and enhanced	<ul style="list-style-type: none"> • Increase in the percentage of county land which promotes diversity of habitat and species
Resources are used in an environmentally sustainable way	<ul style="list-style-type: none"> • Increase in the percentage of household waste sent for reuse, recycling and composting and reduction in the percentage landfilled
The economy and infrastructure are low carbon and environmentally friendly	<ul style="list-style-type: none"> • Net-zero carbon emissions from the Council's own operations by 2030 • Work with partners to ensure Leicestershire is on track to achieve net zero carbon emissions by 2045

3.1 People act now to tackle climate change and protect the environment

To achieve net zero carbon emissions, we need people to take action to reduce their environmental impacts, such as by being more resource-efficient and travelling by sustainable modes.



Our aim by 2026

- More residents actively involved in tackling climate change

Progress in 2021/22

- A major new 2045 Net Zero Strategy and Action Plan for Leicestershire developed and consulted on ahead of upcoming approval.
- £1m of Government funding secured towards the delivery of around 100 public Electric Vehicle charge points across the county.
- “Green Living Leicestershire” launched which supports vulnerable households to reduce their bills by installing cavity wall insulation, loft insulation, solar panels, air source heat pumps and other energy efficiency measures. We have also worked with Solar Together to provide residents with the opportunity to reduce their energy costs by investing in solar panels.
- Our Green Homes Grant delivered 278 environmental measures across 224 homes to improve energy efficiency.
- “Energy Company Obligation” referrals supported 2,357 households to access insulation and heating upgrades.
- Initiatives to promote biodiversity and environmental protection have been included in 38 Neighbourhood Plans.
- Warm homes newsletter launched to inform residents of new initiatives to support energy efficiency improvements.
- An interactive map of 1,800 miles of public footpaths made available to the public to encourage walking

3.2 Nature and the local environment are valued, protected and enhanced

Biodiversity describes the enormous variety of life on Earth. Biodiversity and the eco-system clean our water, purify our air, regulate the climate and provide us with food and resources for medicines. Loss or damage of natural environments is among the biggest threats to wildlife. In Leicestershire, where more than 80% of the land is farmed, our wildlife continues to decline due to a lack of good habitats.



Our aim by 2026

- Increase in the percentage of county land which promotes diversity of habitats and species

Progress in 2021/22

- Over 130,000 trees have been planted following the launch of the Leicestershire Tree Charter, which pledged to plant 700,000 trees over the next 10 years.
- The Leicestershire Lieutenancy promoted the Queen's Green Canopy tree planting initiative to mark the Platinum Jubilee in 2022. Residents from across the County were invited to "Plant a Tree for the Jubilee".
- Shire Environment Grants worth £16,000 were awarded to local projects that improve the biodiversity of Leicestershire.
- Planning permission was granted for restoration of Croft Quarry which will provide over 60 hectares of habitat including reed beds, open water, wet grassland, wet woodland, acid grassland, open mosaic, species rich grassland and woodland.
- A new partnership with local wildlife charity Nature Spot aims to boost biodiversity and wildlife by leaving wildflowers on urban roadside verges across the County. Last year, over 330 species were recorded across 26 different wildlife groups including wildflowers, grasses and insects. The urban wildlife verge scheme now includes 71 verges across 57 parishes.
- Delivery of the planned Bardon link road will produce a biodiversity net gain through new landscaped features and wetland areas.

3.3 Resources are used in an environmentally sustainable way

We are using the planet's resources at a faster rate than they are being replenished and in a way which does not allow them to be reused. To address this, we need to move to a more efficient alternative to a traditional linear economy (make, use, dispose) where resources are used for as long as possible, then recovered, regenerated, or recycled.

Our aim by 2026

- Increase in the percentage of household waste sent for reuse, recycling and composting and reduction in the percentage landfilled

Progress in 2021/22

- The Leicestershire Waste Partnership has reviewed the Leicestershire Resources and Waste Strategy, with a public consultation receiving 5,000 responses. The Strategy includes a range of initiatives to reduce waste sent to landfill and to promote waste prevention, reuse and recycling.
- A campaign to reduce contamination in recycling was delivered. This included adverts on TV and instore at supermarkets, as well as a 'Digivan' travelling around the County. We also promoted national Recycle Week.
- Our Kibworth Household Waste and Recycling Site is being improved and expanded. The redevelopment will allow for more bays and will make the site safer and easier to use.
- Nearly 1000 subsidized home composting bins were sold during 2021/22 to reduce the amount of waste sent to landfill. We also supported Compost Awareness Week to promote home composting.
- 50 two-hour theatre sessions were offered to all primary schools in the County to inspire future generations to adopt more sustainable behaviours by reducing, reusing and recycling.
- Free workshops were provided to community groups covering how to cook healthy meals from scratch and how to make the most from leftovers, as well as furniture restoration and textile reuse.
- Promoted campaigns to reduce food waste, such as "Love Food Hate Waste", a national campaign devised by WRAP, a leading sustainability charity. This included Food Waste Action Week, which highlighted the link between food waste and climate change.
- We began to use plants and artificially created salt marshes to clean oils and chemicals in water collected from road gullies as part of our Ecological Treatment System at our Croft Highways Depot to treat water collected from drains.

3.4 Economy and infrastructure are low carbon and environmentally friendly

Decarbonising the economy and infrastructure is one of the key solutions to addressing the climate emergency, as nearly 70% of Leicestershire's emissions come from commercial, industrial and transport sources.



Our aims by 2026

- Net zero carbon emissions from the Council's own operations by 2030
- Work with partners to ensure Leicestershire is on track to achieve net zero carbon emissions by 2045

Progress in 2021/22

- We developed a 2030 Net Zero Action Plan to achieve net-zero carbon emissions across our operations. The Council reduced its operational emissions by a further 20% in 2020/21 and has achieved a 75% reduction since 2008-09.
- Plans have been approved for our new solar farm that will generate enough electricity each year to power all our properties and thousands of streetlights. The green energy complex is to be built on a 55-acre farmland site, north of the A6 near Quorn. It will save around £600,000-a-year in energy bills.
- The Normandy Way development in Hinckley will include our first zero-carbon primary school. This follows development of a new primary school standard design in line with the Council's Net Zero Carbon policy which achieved an excellent external rating for the sustainable built environment.
- A successful bid with Midlands Connect and four other local authorities is providing £935k Government funding for 349 electric vehicle charging points across the Midlands with up to 100 further charging points across Leicestershire.

- A Hydrogen Skills Academy, backed by Loughborough, Nottingham and Derby Universities, is being progressed to open in November 2023. It complements innovative hydrogen projects being undertaken by the region's Hydrogen Task Force and will be the UK's first practical, industry-based training centre associated with the production, handling, storage and use of hydrogen. Helping put the East Midlands at the forefront of the UK's Net Zero transition.
- We are developing further plans to generate renewable energy, run electric park and ride buses and convert council fleet vehicles to run on renewable fuels. We are also fitting solar panels and low energy lights to buildings.
- A Leicestershire visitor economy intervention with UK Shared Prosperity Funding has been developed to promote sustainable tourism with a focus on improving the green credentials of businesses and celebrating our natural capital as a tourism and leisure asset.

4. Great Communities

This outcome aims for Leicestershire to have active and inclusive communities in which people support each other and participate in service design and delivery. Communities also need to be resilient; able to avoid, prepare for, respond to and recover from emergencies.

Sub-Outcome	Our Aims by 2026
Diversity is celebrated and people feel welcome and included	<ul style="list-style-type: none"> • Work with partners to increase community cohesion and tackle hate crime • Council services are more accessible and inclusive
People participate in service design and delivery	<ul style="list-style-type: none"> • Increase in the percentage of residents who feel that they can influence Council decisions
Cultural and historical heritage are enjoyed and conserved	<ul style="list-style-type: none"> • Increase in the number of residents and visitors engaging in cultural and heritage activities
Communities are prepared for and resilient to emergencies	<ul style="list-style-type: none"> • Increase in the number of active Community Response Plans
People support each other through volunteering	<ul style="list-style-type: none"> • Wide variety of volunteering opportunities and activity across Council services • VCSE organisations remain financially viable and maintain their service delivery

4.1 Diversity is celebrated, and people feel welcome and included

We are committed to equality and diversity because we believe that everyone deserves to be treated fairly and to feel that they can be themselves without fear of discrimination or inequality.

Our aims by 2026

- Work with partners to increase community cohesion and tackle hate crime
- Council services are more accessible and inclusive

Progress in 2021/22

- 711 Ukrainians had arrived in the County by August 2022 under the Homes for Ukraine initiative. We continue to assist sponsors and guests directly and in partnership with district councils and partners.
- A Leicestershire Strategy for Tackling Hate has been implemented together with a partnership Delivery Plan.
- Locally driven Hate Action Plans have been implemented through Community Safety Partnerships with priorities based on local need.
- Our Public Health Service has conducted work with different communities (Bangladeshi, Homeless and Carers) on cancer screening within Charnwood and provided the Primary Care Network with recommendations.
- We have made a commitment to becoming an anti-racist organisation by updating our Equality and Diversity Strategy and Action Plan; scrutinising performance on Equality, Diversity, and Inclusion; promoting “Big Conversation” events in order to engage staff on key initiatives and supporting Holocaust Memorial Day and the Black Lives Matter campaign.
- An equalities mentoring programme has been launched, which focuses on race and equality. Mentors work with senior officers to help drive change and tackle inequality.
- We have retained our Disability Confident accreditation, achieved the Armed Forces Defence Employer Recognition Scheme gold award and scored in the top 100 employees on the Stonewall Employment Diversity Index.

4.2 People participate in service design and delivery

Residents should feel that they can get involved in decisions about public services and policies which affect their lives. County Councillors have a key role in representing the needs and interests of residents, however the Council aims to improve how it engages residents in service design and delivery so that more residents feel they can influence Council decisions.



Our aim by 2026

- Increase in the percentage of residents who feel they can influence Council decisions

Progress in 2021/22

- We have agreed a new Communities Strategy to 2026 to develop and strengthen the collaboration and community involvement that existed before the pandemic but were brought to the fore by the challenges it posed.
- The Leicestershire Equalities Challenge Group consists of individuals and organisations of people with protected characteristics. The Group provides a constructive challenge to us on the equalities implications of proposals and has considered over a dozen proposed policy and service changes in the past year.
- 250 members are signed up to the Neighbourhood Planning Network who can access information affecting their neighbourhoods via the Leicestershire Communities website. The site also includes resources around setting up a community group, accessing funding, Community Managed Libraries and community engagement using asset-based approaches. Use of the website continues to grow with over 80,000 page views and 20,000 users last year.
- Support for parish and town councils in partnership with the Leicestershire and Rutland Association of Local Councils has included promoting understanding and involvement in key programmes of work through briefings on the Strategic Plan, Communities Approach, Waste Strategy and Net Zero targets.
- County Councillors have been supported to liaise with their communities to develop suggestions for the Members Highways Fund, with updates provided on our website.
- The Adults and Communities Engagement and Advisory Panel, representing those accessing services, continues to meet to support strategy and policy development.
- The Children in Care Council and Supporting Young People After Care Group provide forums for children and young people to meet with senior leaders and participate in work to ensure their voice is heard and represented in key service developments.
- The Children and Family Services Voice Strategy drives integration of children and family voice into service design and delivery through a Voice Strategy Group.
- A proactive and inclusive approach is taken to undertaking consultation and community engagement activity.

4.3 Cultural and historical heritage are enjoyed and conserved

Culture is our past, present and future. It's what we have inherited, what we are experiencing now and what we would like to see remembered. We want to preserve and make accessible our local cultural and historic heritage to enhance the wellbeing of residents.



Our aim by 2026

- Increased number of residents and visitors engaging in cultural and heritage activities

Progress in 2021/22

- Visitor numbers to the County's library services and heritage attractions continued to recover following the pandemic.
- Our communities 35 Community Managed Libraries continue to be supported.
- Our Libraries and Heritage service teamed up with the Science Museum to promote the Summer Reading Challenge to create a science and innovation themed challenge to spark children's curiosity about the world around them.
- In December 2021, Charnwood, Harborough and Melton Carnegie museums were all inspected by Visit England and bettered their already high scores from their last inspections.
- The 1620s House and Garden received a top accolade from Visit England. The House and Garden at Donington le Heath was given the national tourism body's Welcome Award.

- Bosworth Battlefield Heritage Centre was also awarded a top prize at the Leicestershire Promotions tourism and hospitality awards 2021, which celebrate the best of hospitality throughout the county.
- The British Museum awarded a prestigious prize to the ‘Do You See What I See?’ project which saw people from diverse groups living in and around Loughborough taking a new look at their history, heritage and culture.
- The Snibston Colliery Park was among the winners of a prestigious Green Flag award. The park was opened in December 2020 after a £3m regeneration project.
- Watermead Covid Memorial Walk opened with 58 trees planted along a 2.6-mile route that links the city side of the park in the south to the county side in the north.
- Green Plaque Awards were awarded to 6 recipients including the first woman to qualify as a pharmacist, the founder of the Quaker Movement, a soldier posthumously awarded the Victoria Cross, and military stables in Melton.
- Advice was offered on more than 800 proposals affecting the County’s historic environment, including County and District planning applications, agri-environment projects and utilities schemes.

4.4 Communities are prepared for and resilient to emergencies

Covid-19 has highlighted the importance of communities being able to respond to, withstand and recover from adverse situations. Developing a Community Response Plan enables a community to identify the skills, knowledge and resources in their local area which can be mobilised during a crisis.

Our aim by 2026

- Increase in the number of active Community Response Plans

Progress in 2021/22

- Proactively supported the Local Resilience Forum in its preparedness, response to and recovery from risks, threats and incidents.
- Provided training and equipment to Flood Wardens and Snow Wardens.
- 59 Community Response Plans now in place

4.5 People support each other through volunteering

Volunteers perform a key role in supporting local communities and delivering our vision for Leicestershire. We want to support volunteering opportunities and activity as volunteers provide wide community benefit beyond the Council's direct service provision.



Our aim by 2026

- To offer a wide variety of volunteering opportunities and activity across Council services
- VCSE organisations remain financially viable and maintain their service delivery

Progress in 2021/22

- Volunteering is supported and promoted through an infrastructure services contract with Voluntary Action Leicestershire. People are supported to volunteer and organisations are supported to recruit, manage, train and develop volunteers.
- Our volunteer managers network coordinates best practice, develops policy, and promotes the use of volunteers to support council services. A Volunteering Opportunities website is also being developed.
- Our SHIRE Grants budget was supplemented by an additional £500,000 to help VCSE organisations to manage the impacts of the pandemic. The budget was allocated in full to 169 projects, totalling approximately £900,000 of investment.
- Council departments manage diverse volunteering programmes, with a total of 391 active volunteers recorded in March 2022. Examples include:
 - Programmes in Childrens & Family Services (with 250 volunteers) that offer befriending services, advice and support to vulnerable children in communities and care.

- Environment Action Volunteers help residents to establish positive environmental behaviours through attending events, delivering talks and providing support and advice to residents.
- Piloting a green social prescribing resource in Charnwood that encourages people to take up volunteering opportunities in green spaces.
- A friendship group for people with learning disabilities, along with their carers and friends. The group provides activities which develop an individual's independence, as well as supporting their health and wellbeing.
- Our County Council Chairman hosted an event for Leicestershire volunteers and attended over 170 events during the year, recognising the work of a variety of groups and organisations.

5. Improved Opportunities

This outcome aims to ensure that all children and young people get the best start for life and have the opportunities they need to fulfil their potential, regardless of their circumstances. We believe children are best supported to grow within their own families and as such the outcome reflects our aspiration for families to be self-sufficient. It also aims to ensure that disadvantaged adults, such as those with learning disabilities and/or mental health conditions, can aim high and achieve their aspirations.

Sub-Outcome	Our Aims by 2026
Every child gets the best start for life	<ul style="list-style-type: none"> • More children achieving the expected level of development at age 2-2.5yrs • More children achieving a good level of development at foundation stage
Every child has access to good quality education	<ul style="list-style-type: none"> • Sufficient, high quality school places and specialist SEND provision • Improved educational attainment amongst disadvantaged pupils
Families are self-sufficient and enabled to be resilient	<ul style="list-style-type: none"> • Families are able to deal with issues as they arise, and the Council achieves its targets for the number of families achieving progress through the Supporting Families Programme
Young people and adults are able to aim high and reach their full potential	<ul style="list-style-type: none"> • Best 25% of counties for the rate of young people aged 16-17 who are NEET • Best 25% of counties for the percentage of adults (learning disability) who are in employment/living independently • Percentage of adults (mental health) who are in employment/living independently is above national average

5.1 Every child gets the best start in life

The first 1,001 days from pregnancy to age two set the foundations for cognitive, emotional and physical development. We want to improve how we support families during these 1,001 days.



Our aims by 2026

- More children achieving the expected level of development at age 2-2.5yrs
- More children achieving a good level of development at foundation stage

Progress in 2021/22

- Following lower uptake during the pandemic, our Early Years Inclusion and Childcare service worked with partners to ensure that children eligible to access free education entitlements did so.
- An informative animated video was launched to help new parents learn the importance of their child's first 1001 days of life. The video was part of our campaign to highlight the critical significance of early growth and development by supplying information and advice to new and existing parents on how they can best support their baby's brain development.
- In June 2022 we hosted a series of events sharing information, guidance and support for new and expectant parents. Sessions took place in Wigston, Braunstone Town, Barwell, Market Harborough, Melton and Coalville.
- Top tips for parents have been written to support two-year-olds for reading, problem solving, physical skills, social skills and communication.

- The Healthy Tots Programme has been successfully redeveloped and relaunched with 31 settings signed up between February and July 2022.

5.2 Every child has access to good quality education

Education has the potential to drive social mobility and improve outcomes for the next generation. It is therefore important that children have access to good quality education. Further, we believe that most children with SEND should have their needs met in a mainstream school to promote inclusion and better outcomes.



Our aims by 2026

- Sufficient, high quality school places and specialist SEND provision
- Improved educational attainment amongst disadvantaged pupils

Progress in 2021/22

- Work continues to support those most at risk through targeted funding and additional support for schools. Partnership work in 2022/23 aims to reduce the gap widened by remote education and raise attainment amongst the most disadvantaged.
- Almost £15m income from Section 106 agreements linked to new developments was collected in 2021/22 in respect of supporting education. A total of 90 school capital improvement projects were completed totalling £3.7m, including new boilers, windows, roofs, asbestos removal, and fire risk improvements.
- 705 additional school places were delivered in 2021/22 through a mixture of projects.

- Our Special Educational Needs and Disabilities Information Advice and Support Services (SENDIASS) website has been further developed to highlight support services available for SEND.
- Our SEND Programme has seen 19 new resource bases established in mainstream schools.
- A new 'eco-classroom' opened as part of a £30m scheme to improve provision for young people with special educational needs and disabilities (SEND) in the county. The Den is a new hub at Forest Way School in Coalville which provides a space for up to 12 pupils with communication and interaction needs.
- A new Forest School has also been opened. Outdoors, hands-on learning can play a big part in children and young people's development and wellbeing. Cloud Hill Forest School is based in Worthington and runs on Saturday afternoons.
- In October 2021 we announced work was to begin on the next stage of a £17.5m extension and refurbishment project which will provide hundreds of new school places in the Shepshed area. This sees the former Shepshed High School building transformed into a 630-place school for St Botolph's CE Primary School, which will increase in size over the years ahead.
- In August 2022, a planning application for a new £6m primary school on land off Normandy Way in Hinckley was submitted. The school will accommodate up to 210 pupils. In line with our green agenda, the school will also include solar panels and air source heat pumps and is expected to open in September 2023.
- The Healthy Schools Programme was successfully redeveloped and relaunched, with 64 schools signing up to the programme since September 2021.

5.3 Families are self-sufficient and enabled to be resilient

Many families have complex needs which require support to enable their children to achieve good outcomes in life. We need to identify issues early and work directly with families in collaboration with other services.

Our aims by 2026

- Families are able to deal with issues as they arise, and the Council achieves its targets for the number of families achieving progress through the Supporting Families Programme.

Progress in 2021/22

- Our Children and Families Wellbeing Service continued to focus on supporting the most vulnerable families in Leicestershire. The integrated service is delivered from our Family Wellbeing Centres across the county and provides targeted support to families in need.

- We have established an interagency-agency group to address the impact of the cost-of-living crisis including an action plan to improve debt advice, contain illegal money lenders, widen interventions on child poverty and develop new initiatives to support struggling families.
- The Household Support Fund scheme offered vulnerable families help with fuel and food costs. We aimed to have spent £7.2m supporting households in Leicestershire with living costs such as ensuring that children entitled to Free School meals also get this benefit in the holidays.
- We funded Citizens Advice to help them offer vital support, including an extra £250k to bolster money and debt advice.
- We also provided people in hardship with furniture and electrical goods, plus emergency food and fuel support.
- Our volunteer run community fridges continued to support their local communities by providing donated food for free to anyone who needed it.
- Hampers containing everything from Christmas dinner ingredients to books and gifts for children were handed out to families in need across Leicestershire in the run up to the festive season.
- We worked with our partners Active Together to deliver our Summer 2022 Holiday Activities and Food (HAF) programme, Leicestershire Holidays Together, which provided free holiday clubs for children living in Leicestershire who were eligible for free school meals.
- We completed a Sport England-funded Active Families programme to encourage physical activity as family groups. This was targeted at families previously worked with by the Supporting Leicestershire Families and Early Help Services.
- A service review for children on the edge of care has been completed and will lead to a more focused use of resources in 2023.

5.4 Young people and adults are able to aim high and reach their full potential

To fulfil their potential, young people need access to relevant, good quality post-16 education, training and employment opportunities. It is also critical that adults who may be disadvantaged due to learning disabilities and/or mental health issues are able to live as independently as possible and access suitable employment.



Our aims by 2026

- Best 25% of counties for the rate of young people aged 16-17 who are NEET
- Best 25% of counties for the percentage of adults (learning disability) who are in employment/living independently
- Percentage of adults (mental health) who are in employment/living independently is above national average

Progress in 2021/22

Post 16 / NEET

- The Council continues to support young people aged 16-19, and up to 25 with special educational needs or disabilities, with advice and guidance to help them into education, employment and training.
- The Care Leaver Service has dedicated resources to ensure young people receive the right financial advice when they need it, have access to appropriate accommodation and receive emotional wellbeing intervention.

- We supported Young Carers Action Day, and we continue to offer a range of activities and support to our young carers.
- We introduced a family worker to specifically help those affected by a person's substance misuse, including support to young people as well as young carers, through input from Turning Point.

Disadvantaged Adults

- We continued to implement our objective to ensure that working age adults can live independently in supported living where appropriate.
- We launched a supported living scheme for people with mental health as a support need.
- We commenced work to refresh the Council's Supported Employment offer.
- We started a new mental health floating support service.
- Adults with disabilities or mental health issues also became a target group for the new Multiply Project led by our Adult Learning Service.

6. Strong Economy, Transport and Infrastructure

This outcome reflects our aim to use innovation and skills to build a productive, inclusive and sustainable economy at the cutting edge of science, technology and engineering. We also need our transport, housing and digital infrastructure to support a growing population and economy.

Sub-Outcome	Council Aims by 2026
There is close alignment between skill supply and demand	<ul style="list-style-type: none"> • Fewer employers reporting skills shortages or gaps • Increased opportunities in the labour market for young people
Leicestershire has the infrastructure, including transport, for sustainable economic and housing growth	<ul style="list-style-type: none"> • Infrastructure capacity and capability supports growth and net zero carbon emissions
Leicestershire is an attractive place where businesses flourish	<ul style="list-style-type: none"> • Increased investment in Research and Development • Increase in the number of businesses and business survival rates
Economic growth delivers increased prosperity for all	<ul style="list-style-type: none"> • Growth in Gross Value Added (GVA) in the local economy corresponds with a reduction in deprivation

6.1 There is close alignment between skill supply and demand

It is important to ensure that education and skills are aligned to employers' needs as this will drive economic growth and ensure people can get good jobs and make progress in their careers.



Our aims by 2026

- Fewer employers reporting skills shortages or gaps
- Increased opportunities in the labour market for young people

Progress in 2021/22

- We continue to work with the Leicester and Leicestershire Enterprise Partnership (LLEP) to forecast future skills needs, including considering new and growth sectors.
- In June 2022, universities and councils across Leicester and Leicestershire signed a historic agreement to work together to drive economic growth and tackle social challenges across the region.
- Through the Education, Employment and Training Strategy we have invested in targeted careers advice and guidance for 16- to 18-year-olds.
- A Visitor Economy Skills Charter has been developed to increase engagement between industry and the education sector to develop a pipeline of future talent.
- Employment Skills Plans are in place for Council highway works projects over £1m through the Midlands Highways Alliance Plus framework.
- We have been awarded £3m to improve adult basic numeracy skills through the UK Shared Prosperity Fund Multiply Programme which will involve the delivery of hundreds of free courses over the next three years.
- We have encouraged companies to extend placements offered under the Government's Kickstart Scheme from 6 to 12 months, after the LLEP pledged £500,000 in support. The scheme offers work placements to 16–24-year-olds receiving universal credit and at risk of becoming long-term unemployed.

- The Council continues to support apprentices employed directly by the Council as well as apprentices with other local employers via our Adult Learning Service.
- Our Work and Skills Leicestershire project offers support, advice and information to anyone actively seeking paid employment, training or volunteering. It has supported over 650 local people looking for employment, through a personalised work plan, with over 100 subsequently in employment.
- People were able to sign up for hundreds of part-time day, evening and weekend courses as part of Go Learn, through our Adult Learning Service. The courses started early in 2022 and covered a wide range of subjects.

6.2 Infrastructure for sustainable economic and housing growth

We need our housing, transport and digital infrastructure to support economic and population growth, whilst helping to deliver net zero carbon emissions.



Our aim by 2026

- Infrastructure capacity and capability supports growth and net zero carbon emissions

Progress in 2021/22

- With significant numbers of new homes needed by 2050 and a population set to grow by 20% in the next 20 years its crucial we put the right infrastructure in the right place. We are working with District Councils to plan for a future Leicestershire and with developers and partners to lever money - £120m over the last two years – to pay for the infrastructure communities need.

- A Statement of Common Ground relating to Housing and Employment Land Needs has been prepared by the County Council, the City Council and the seven district councils to confirm the apportionment of the 91,000 new homes that will be needed in the years to 2036. The statement was approved by the County Council in September 2022 but has not yet been endorsed by all partners.

Major Schemes and Road Maintenance

- Over £20m in income from Section 106 agreements has been secured for mitigating the impact on infrastructure from housing and economic growth across the county, including roads, schools, civic amenity sites and libraries.
- In September 2021 a multi-million-pound project to tackle congestion and ensure smoother journeys for motorists was completed on the M1 J23 and A512 at Loughborough. The scheme funding comprised different sources including developer contributions, £5 million from Highways England and £13.8 million from the LLEP.
- In April 2022 work began on a package of road improvements in Hinckley which will mean smoother and more efficient journeys for motorists. The scheme is focused in and around Rugby Road, which suffered from significant congestion at peak times.
- In December 2021 we concluded an agreement to fund the southern leg of the Melton Mowbray Distributor Road. We expect to receive up to £18.2m from Homes England towards the total cost. The scheme unlocks the development of the Melton South Sustainable Neighbourhood with a minimum of 2,000 homes by 2036, alongside 20ha of employment land, a new local centre and primary school.
- The A511 around Coalville has been identified as part of the Council's Major Road Network (MRN), providing a key link between the A42 and M1. We expect to receive £41m from the Department for Transport towards the cost. The improvements will provide businesses with an enhanced route to the Strategic Road Network, which to the north offers connection to the international gateways including East Midlands Airport and Gateway Industrial Cluster (EMAGIC).
- In September 2021 after a successful bid, we received £250,000 towards upgrading old traffic lights to improve reliability and reduce faults to provide longer term maintenance savings. LED lights will also be retrofitted to some signals to save on energy use.
- In May 2022 work got underway to protect more than 600,000 square metres of Leicestershire roads from potholes. We also invested £11 million more in maintaining and repairing our roads.
- The County experienced three major storms in Spring 2022. Over this period, our teams responded to 176 trees down as well as several flood related issues. Over 350 enquiries were dealt with.
- In 2021/22 a total £19.28m was invested in Highways Asset Maintenance including £15.6m on carriageways, £1m on footways and rights of way, £0.42m on bridge

maintenance and strengthening, £1.63m on street lighting maintenance, £0.26m on flood alleviation and £0.23m on traffic signal renewal.

Public Transport

- In October 2021 we published our Bus Service Improvement Plan (BSIP) setting out our ambitions to deliver the Government National Bus Strategy and in April 2022 our Enhanced Partnership with Local Bus Operators was formed, which will be the delivery vehicle for our BSIP ambitions going forward.
- 13 Community Transport Projects continue to help provide accessible public transport across the County. We have launched a fresh approach designed to better connect rural areas. 3 fully accessible minibuses bookable via app or call centre offer a modern, on-demand transport service between Leicester and Hinckley. FoxConnect is a 3-year trial funded through our successful bid for £1.3m from the Government's Rural Mobility Fund.

Walking and Cycling

- We secured c£170k of Government funding to support development of Local Cycling and Walking Infrastructure Plans, with Loughborough and an area to the south of Leicester the first two to be developed.
- In March 2022 staff at workplaces were encouraged to take part in a new challenge by travelling in an active way and leaving their cars at home. The Let's Go Workplace Challenge took place, with participants from 75 workplaces clocking up miles of green and healthy travel. The challenge invited anyone who travels to work to walk, run, wheel, ride or use public transport.

School Transport

- We teamed up with schools to run park and stride schemes to get children to walk safely to school. The schemes allow children to meet in a nearby car park before making the 5-10 minute accompanied walk to school. The initiative aims to reduce traffic congestion, boost activity and reduce air pollution.
- More than 500 fines were issued to drivers putting the safety of children at risk by parking illegally outside the gates of Leicestershire schools. Our two electric camera enforcement cars patrol 167 schools at picking up and dropping off times.
- The Schools Streets Initiative aims to provide a solution to congestion issues often experienced outside of schools by providing a time limited congestion free zone within the immediate vicinity of the school.
- A new system which allows parents to apply for SEN transport went live in February 2022 with compliments from members of the public on how easy to use and effective the new system is.

6.3 Leicestershire is an attractive place where businesses flourish

To support a flourishing economy, we need higher productivity rates facilitated by increased investment in research and development (R&D). There are also opportunities to capitalise on our prime location for international business.



Our aims by 2026

- Increased investment in Research and Development
- Increase in the number of businesses and business survival rates

Progress in 2021/22

- In partnership with the Midlands Engine, we invested in key development sites. This forms part of the Midlands Investment Portfolio, which is a £33bn investment portfolio to create 220,000 jobs in the region.
- Plans for the UK's only inland freeport, led by the Council, will incorporate land at East Midlands Airport in Leicestershire as well as Ratcliffe on Soar Power station in Nottinghamshire and next to the Toyota factory in Derbyshire. The Freeport is on schedule to become operational from late 2022 and is expected to create around 61,000 new jobs and generate £8.9bn for the economy over the next 30 years, while helping level up the region.
- Airfield Business Park in Market Harborough has been such a success that we are planning to extend it, with a planning application for another 27 units. We strive to ensure that developments are built in a sustainable manner, aiming to produce zero carbon during construction and with the new builds being energy efficient.
- In the last year we provided just under £1m to support businesses, including community pubs.

- We continue to support businesses including through the Business Hub, which offers advice and guidance and providing space for innovative businesses to locate and expand in the County. We are also working with partners and the LLEP to support the local economy's recovery from Covid-19.
- The Place Marketing Team secured £185,000 of funding to support place marketing activities.
- In June 2022 visitors to Leicestershire could enjoy a new 'Fitcation' short break, experiencing a wide range of thrill-seeking challenges and adventure activities, as well as learning a new sport or finding some active family fun. Developed by Visit Leicester in partnership with Active Together, one of the key aims of the Fitcation campaign is to encourage families, individuals and groups to include physical activities when booking a short break.
- We have provided support to adult social care businesses through staff expertise, public health and infection prevention and control advice, financial support passported from government, and the Inspired to Care recruitment and retention initiative.
- Our Trading Standards Service continues to deliver a wide range of regulatory advice to existing and start-up businesses, as well as continuing to undertake enforcement activities to reduce the risk of harm to legitimate businesses and the local economy.
- The Leicestershire Rural Partnership has recently renewed its Rural Framework which sets the priorities until 2030 for the work of the group in supporting the vitality of rural areas.

6.4 Economic growth delivers increased prosperity for all

Inclusive economic growth does not just contribute to Gross Value Added in the local economy; it improves living standards by reducing levels of deprivation and creating opportunities for everyone.

Our aim by 2026

- Growth in Gross Value Added (GVA) in the local economy corresponds with a reduction in deprivation

Progress in 2021/22

- To address rural isolation and connectivity, there is a need to improve rural broadband focussing on specific rural blackspots. We completed phase 3 of our broadband programme 3 months ahead of schedule and have connected 75,000 homes and 97% of the county's commercial coverage.
- We are also working with Building Digital UK on an initiative which by 2024 will create around 50 hubs in rural areas, including schools, libraries, recycling centres and

offices. Gigabit broadband is the fastest connection currently available, and the project will help connect at least 85% of premises by 2025.

- We have been working alongside district councils to ensure the County doesn't miss out on Government funding allocated to district councils to install energy efficiency measures in those homes most in need of support. As a result, over the next year, more than £3m will be spent making Leicestershire's homes warmer and tackling the crucial issue of rising energy prices.
- We continue to work to raise awareness of Free School Meals with eligible families

7. Safe and Well

This outcome aims to ensure that people are safe and protected from harm, live in a healthy environment and have the opportunities and support they need to live active, independent and fulfilling lives.

Sub-Outcome	Council Aims by 2026
People are safe in their daily lives	<ul style="list-style-type: none"> • More residents feel safe in their local area • Fewer children and young people involved in and impacted by criminal behaviour
People at the most risk are protected from harm	<ul style="list-style-type: none"> • Vulnerable children and adults are identified and protected from harm and abuse
People enjoy long lives in good health	<ul style="list-style-type: none"> • Improved healthy life expectancy and reduced health inequalities • Increased proportion of residents with a healthy weight • Improved mental wellbeing and reduced prevalence of mental ill health
Carers and people with care needs are supported to live active, independent and fulfilling lives	<ul style="list-style-type: none"> • More people find it easy to access information and advice about Adult Care services • Improvements in the experiences of those who receive adult social care and support • Carers feel more recognised, valued and supported to undertake their caring role

7.1 People are safe in their daily lives

We aim to keep people safe by working with partners such as district councils, NHS, Police and Fire and Rescue services to raise awareness of and prevent crime.

Our aims by 2026

- More residents feel safe in their local area
- Fewer children and young people involved in and impacted by criminal behaviour

Progress in 2021/22

- In June 2022 we agreed a new Community Safety Strategy. The Strategy sets out work to pursue priorities including identifying and protecting the most vulnerable, reducing crime and the fear of crime, reducing the incidence and impact of Anti-social behaviour (ASB), reducing the harm from alcohol and substance misuse, reducing the risk of harm to young people from cybercrime and bullying. Increasing reporting of domestic abuse and protecting the most vulnerable and increasing confidence in reporting of hate incidents.
- We are strengthening links with district Community Safety Partnerships to help shape future priorities using an evidence-based approach and linking with existing public health provision.
- We have led the development of the regional response to tackle child criminal exploitation and to develop improved information sharing.
- We were successful in achieving a government grant to increase services, development and training regionally regarding protecting children and young people from extra familial harm.
- We are working with the Violence Reduction Network to implement a public health approach to Serious Violence with a particular emphasis on young people.
- Our Highways Service works with Leicestershire Police to change street lighting settings to support local policing operational activities and prioritises the removal of graffiti on council highways assets that is racially offensive or sexually explicit.
- Our Trading Standards Service continues to disrupt the illegal supply of age restricted products including reducing the risk of children accessing cheaper illicit tobacco products and continuing to raise awareness of and tackle scammers and rogue traders who exploit vulnerable consumers.
- We have reduced First Time Entrants to the Criminal Justice System. Our Children and Families Department has a strong prevention offer, that is supported by an enhanced youth work offer and can identify children at the earliest opportunity to provide support and intervention.
- We have installed more measures including vehicle-activated signs which show a slowdown message and village gateway signs designed to encourage road users to slow down before entry. Funded from our £1.4m scheme to provide small scale highway and environmental improvements.

7.2 People at the most risk are protected from harm

There is a long-term upward trend in demand for child safeguarding, and we have a duty to work with partners to identify and protect vulnerable people.



Our aim by 2026

- Vulnerable children and adults are identified and protected from harm and abuse

Progress in 2021/22

Children's Social Care

- In March 2022 Ofsted reported on the positive progress made in supporting vulnerable children and young people in need of help and protection in Leicestershire. They concluded that positive progress had been made across the service and that the quality of social work support provided to children in need of help and protection had improved.
- We have co-located our First Response Service, Children and Family Wellbeing and Domestic Abuse team to streamline processes when children are first referred for services. We are seeing a timely response with children receiving the right service from the outset.
- Our Virtual School supports activities to promote trauma informed practice in schools, and activities that provide children in care with opportunities to lift their self-confidence and be aspirational.
- We have continued to recruit and support foster carers to help the almost 700 children in care in the County. Our fostering team have been out on the road at various pop-up events, virtual sessions and venues across the County.

- We reviewed and relaunched Corporate Parenting Apprenticeships Scheme for Care Leavers.

Domestic Abuse

- We successfully recommissioned Domestic Abuse and Sexual Violence Services to support victims.
- More than £1.1m is being invested in providing safe accommodation and support for victims of domestic abuse and their children in Leicestershire. The funding will ensure they are able to access much-needed support such as therapy and counselling, as well as a safe place to live.
- Artwork has been displayed to open conversations about domestic abuse. The showcase was an artistic collaboration between Leicestershire-based artists and groups.

Vulnerable Adults/Adult Safeguarding

- During 2021/22 we received 5,500 adult safeguarding alerts. An alert can include any concern for welfare and will often require a response from the Authority. There were 700 completed safeguarding enquiries, and of the enquiries where an outcome was expressed, 93% were fully or partially achieved.

7.3 People enjoy long lives in good health

Good health is a basic precondition for people to take an active role in family, community and work life. Health outcomes are influenced by a wide range of social, economic and environmental factors, known as ‘wider determinants of health’. We will embed a ‘Health in all Policies’ approach to systematically consider the health implications of all decisions.

Our aims by 2026

- Improved healthy life expectancy and reduced health inequalities
- Increased proportion of residents with a healthy weight
- Improved mental wellbeing and reduced prevalence of mental ill health



Progress in 2021/22

Life expectancy and reduced health inequalities

- In June 2022 we agreed a new Public Health Strategy to protect and improve the health and quality of life of everyone in Leicestershire. The Strategy includes building on the strengths of people in communities, promoting healthy living and healthy places, providing public health services that meet community needs, and working in partnership to transform services.
- We have continued to promote the importance of practical steps to help protect against the spread of Covid-19 including testing, getting vaccinated, wearing face coverings in crowded indoor spaces and staying at home when ill.
- We are actively engaging businesses to inform the new public health workplace health offer, which will go live in April 2023. 133 local businesses have been engaged so far.
- We continued the successful roll out of the Making Every Contact Count (Healthy Conversation Skills) Programme, linking in with district councils and health partners to embed training and adopt the ethos.
- We successfully recommissioned a health trainers service for adult offenders on community orders or license, to support them to make a change towards a healthier lifestyle.
- People are supported to have an effective voice about health and care services through a contract to deliver the Healthwatch service in Leicestershire. The Service continues to gather community feedback on services and to report on and drive change by health and care commissioners and providers.

Healthy Weight

- Our Good Food Leicestershire (GFL) service works to tackle issues from food poverty to diet-related ill-health and was named a bronze award winner in a competition run by Sustainable Food Places. The application highlighted the varied projects and partnerships which include championing local producers.
- More than 150 new and expecting mums benefitted from special healthy food boxes. The project forms part of Good Food Leicestershire's work to understand how we can support residents to access healthier foods to improve health and minimise diet-related risks for women who are overweight in pregnancy and post pregnancy
- Help has been made available to men in Leicestershire looking to lose weight, exercise more and eat more healthily. Our Men's Weight Management service set up new face-to-face sessions where men could get support from experts - and each other - as they improve their lifestyles. Held in partnership with Active Leicestershire, Men's Weight Management has offered a free, 12-week programme, delivered locally in group sessions.
- We implemented a new healthy weight strategy and action plan and are working with health partners to pilot a tier 3 weight management service.

Mental Health and Wellbeing

- We opened a new supported living scheme for people with mental health as a support need.
- To support World Suicide Prevention Day, Leicester, Leicestershire and Rutland Suicide Audit & Prevention Group (SAPG) and Start a Conversation – Suicide is Preventable, hosted a series of events to raise awareness and offer education and wellbeing support to professionals and the general public.
- In Spring 2022 we urged men to talk to their friends about their feelings, as part of a campaign to reduce levels of male suicides - the 'Get the Ball Rolling' campaign. In addition, a range of support services are available to support people with their mental health including include The Tomorrow Project, Harmless, Mensoar and DistrACT.
- We are a trauma informed organisation. Launched in May 2021, we have an aim to understand, recognise and do our best to respond to the impact of trauma on mental health and physical well-being of our children and families.
- Children in care and previously looked after children's emotional wellbeing is tracked through a questionnaire. Where they are experiencing difficulties, they have access to support through the Therapeutic Fund, Adoption Support Fund and CAMHS.
- The Friendly Communities of Leicestershire initiative, developed with our Public Health Service, is tackling loneliness and social isolation.

Substance Misuse

- We successfully recommissioned a substance misuse treatment service which combines community treatment, inpatient detoxification services and residential rehab services, and is more tailored to the needs of Leicestershire residents.
- We have secured national grant funding to enhance drug treatment and harm reduction services specifically focusing on criminal justice clients and those who are homeless.
- We have set up a drug and alcohol deaths review panel to review deaths directly caused by substance misuse and identify lessons learned to prevent future deaths.
- Introduced a Fibrioscanner project within our Substance Misuse Service for early identification to prevent liver disease and further harm.

7.4 Carers and people with care needs are supported to live active, independent and fulfilling lives

It is important that people find it easy to access information about social care services and that service users are satisfied with their care and support, live as independently as possible and report a good quality of life. The Council also aspires for unpaid carers in the community to feel more recognised, valued and supported to undertake their caring role.

Our aims by 2026

- More people find it easy to access information and advice about Adult Care services
- Improvements in the experiences of those who receive adult social care and support
- Carers feel more recognised, valued and supported to undertake their caring role.

Progress in 2021/22

Access to Information

- The Customer Portal continues to be developed with further referral pathways for both the public and professionals.
- Promoted Online Financial Assessments by updating the Council's website to provide clearer information and introducing flow to support ease-of-use, with questions to signpost people to information.
- Pilots of '3 Conversations' model - an innovative approach to needs assessment and care planning which focuses on people's strengths and community assets – in two innovation hub sites and included Local Area Coordinators (LACs) to facilitate signposting, sharing local knowledge and quick access to local community resources.
- The new transformed LCC Care Technology (CT) service has been running since 25th April 2022. Since launch, demand for the service has been strong and is growing. The service is currently on track to meet or exceed its current targets for new users (of 1450 in year one) and financial benefits delivered to the Council.

Better Care Fund

- Our Better Care Fund (BCF) plan, that includes both the NHS and local government, supports the joining up of health and care services so people can live independently in their communities for as long as possible. We agreed a refreshed BCF plan for 2021/22 worth c£65m and also a new BCF Plan for 2022/23.

Experience of Care

- We have investing £7.5m in 51 units of new residential accommodation – helping older people, adults with learning and physical disabilities and adults with mental health conditions to live as independently as possible.
- In September 2021 there was the official opening of our new adult social care facility in Loughborough. New Ashby Court was the third new adult social care scheme

opened by the Council this year. The two small blocks of flats have been refurbished to support adults with learning disabilities and adults aged over 18 coming into adult social care services.

- In April 2022 we launched a new technology service fitting the homes of elderly and vulnerable adults in Leicestershire with equipment such as fall detectors to help keep them safe 24 hours a day. It allows people to be monitored by trained staff and means that help can be quickly summoned if needed, while reducing the pressure on 999 services.
- Our Inspired to Care Team offered recruitment and retention support to external care providers. We continue to support people to take up a range of jobs in adult social care.
- We are also working with adult social care employers towards the Care Charters for home care and care homes.

Carers

- In June 2022 we launched consultation on a new Carers Strategy. The Strategy aims to recognise and value carers, help them have their own lives alongside their caring responsibilities and make sure they have the support they need at the times they need it. We are commissioning a carers support service with a focus on information and advice/support.

